

Continuous Duty — Precise Positioning



1/4 - 6 Ton

AC Model Air Powered Hoist

COFFING AC Models - Air chain hoists featuring continuous duty service for precise, infinitely variable speed and accurate load spotting.

- **CAPACITIES & LIFT** - Rated loads 1/4 to 6 Tons. 10, 15, and 20-foot standard. Other lifts available.
- **CONTROLS** - Standard rope pull cord is 3-feet less than lift. Optional twist rod, lever pendant, and hook-mounted controls available.
- **SUSPENSION** - Swivel top and bottom hooks with safety latches standard. Air trolley available in 3 and 6 tons — consult factory.
- **SPEEDS** - Precise and infinitely variable speed control for accurate load spotting. 90 PSI air operating pressure.
- **COMPACT CONSTRUCTION** - Ideal for use in areas with restricted space. Lightweight and portable - 1/4, 1/2 & 1 ton units weigh less than 50 lbs.
- **MOTOR** - Rotary vane type motor provides for high uniform torque and quick response. Bronze muffler built into valve housing for quiet operation.
- **PLANETARY GEARS** - Designed to withstand continuous operation at full load. Permanently lubricated for long life.
- **DISC TYPE MOTOR BRAKE** - Releases automatically when motor shaft rotates in hoisting direction and sets with slight motor shaft rotation in lowering direction. Designed to eliminate load drift.
- **MAIN VALVE** - Air balanced, spring centered unit provides smooth starts and excellent inching characteristics.
- **LIMIT SWITCHES** - Upper and lower paddle limit switch with plugging to regulate load travel.
- **LIFETIME WARRANTY**

SPECIFICATIONS

AC Model Air Powered Hoists

Capacity		Model Number	No. of Chains	Standard Lifts (Ft.)	Lift Speed (FPM)	Headroom (In.)	Housing Dimensions (In.)			Air Pressure (psi)	Net Wt. (Lb.)
(Lb.)	(Ton)						H	W	L		
500	1/4	AC-0500	1	10, 15, 20	61	14 ^{13/16}	9 ^{1/4}	4 ^{15/16}	15 ^{3/8}	90	37
1000	1/2	AC-1000	1	10, 15, 20	41	14 ^{13/16}	9 ^{1/4}	4 ^{15/16}	15 ^{3/8}	90	37
2000	1	AC-2000	2	10, 15, 20	21 ^{1/2}	17 ^{1/2}	9 ^{1/4}	4 ^{5/8}	15 ^{3/8}	90	46
6000	3	AC-6000	1	10, 15, 20	10 ^{1/2}	22 ^{5/8}	10	8 ^{5/16}	21 ^{1/2}	90	109
12000	6	AC-12000	2	10, 15, 20	5 ^{1/4}	30 ^{7/8}	10	9 ^{13/16}	21 ^{1/2}	90	175

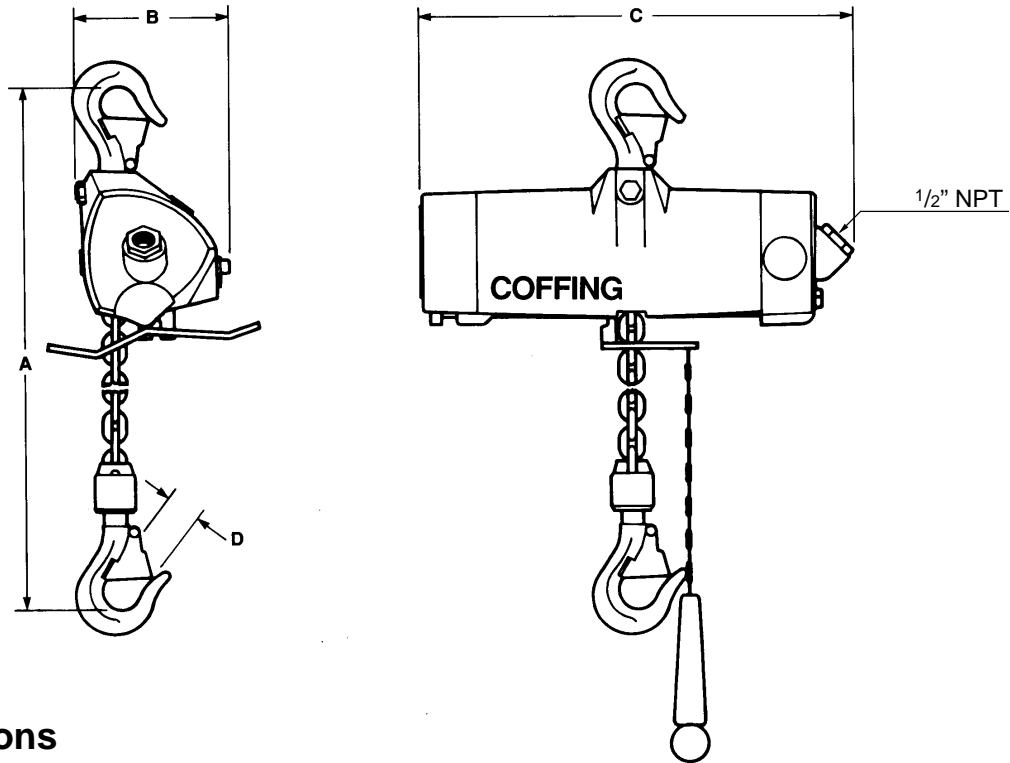
NOTE: For complete dimensional data, refer to Coffing Dimensional Databook.

Air Consumption Data

Note: Speed and air consumption figures should be used only as estimates of hoist performance. Actual data may vary plus or minus 15% because of individual motor characteristics. Do not operate AC hoists at an air pressure of greater than 100 psi. A 1/2" NPT air filter-regulator-lubricator is recommended for optimum operation.

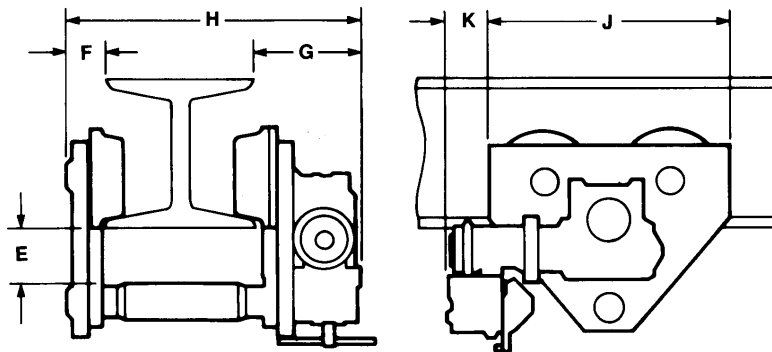
Capacity		Full Load		Half Load	
		(fpm)	(cfm)	(fpm)	(cfm)
500	1/4	61	76	86 ^{1/2}	91
1000	1/2	41	78	71	104
2000	1	21 ^{1/2}	77	35 ^{1/2}	101
6000	3	10 ^{1/2}	84	16	106
12000	6	5 ^{1/4}	84	8	106

AC (Hook Mount) 1/4 to 6 Ton



Dimensions

Model Number	Rated Load		A	B	C	D	Reeving
	(Lbs.)	(Ton)					
AC-0500	500	1/4	14 ^{13/16}	4 ^{15/16}	15 ^{3/8}	1 ^{3/16}	Single
AC-1000	1000	1/2	14 ^{13/16}	4 ^{15/16}	15 ^{3/8}	1 ^{3/16}	Single
AC-2000	2000	1	17 ^{1/2}	4 ^{5/8}	15 ^{3/8}	1 ^{3/16}	Double
AC-6000	6000	3	22 ^{5/8}	8 ^{5/16}	21 ^{1/2}	2	Single
AC-12000	12000	6	30 ^{7/8}	9 ^{13/16}	21 ^{1/2}	2 ^{7/16}	Double



Air Powered Trolley For 3 & 6 Ton AC Hoist

Product Code	Rated Load (Lbs.)	Beam Height (Ins.)	Flange Width (Ins.)	Minimum Radius Curve (Ins.)	E	F	G	H	J	K	Shipping Weight (Lbs.)
17450	6000	12-24	5.20-10.30	55	3 ^{1/4}	1 ^{1/2}	6 ^{5/16}	13	12 ^{15/16}	5	99
17455	12000	18-24	5.70-10.30	70	4 ^{5/8}	1 ^{5/8}	7 ^{1/8}	14 ^{7/16}	16 ^{5/8}	3 ^{1/8}	212

Dimensions are in inches unless otherwise indicated.